

PRODUCT OVERVIEW



USE CASES

- Unmatched Endpoint Visibility & Validation
- Automated Asset Inventory
- Real-Time Threat Detection
- Flexible Enforcement for Incident Response & Remediation
- Compliance Support & Audit Resolution
- Network Insights & Systems Optimization
- Augmentation for Legacy 802.1X/NAC Solutions

ENDPOINT VISIBILITY, VALIDATION & ENFORCEMENT

Great Bay Software is an IoT security and operational efficiency leader providing comprehensive visibility and control over endpoints on the network so organizations can secure data, preserve customer trust and protect revenue. By delivering real-time insight into device identity, location and behavior, Great Bay helps organizations identify and respond to potential threats and improve operational efficiency, while supporting millions of connected devices.

HOW THE GREAT BAY NETWORK INTELLIGENCE PLATFORM™ WORKS

UNMATCHED VISIBILITY

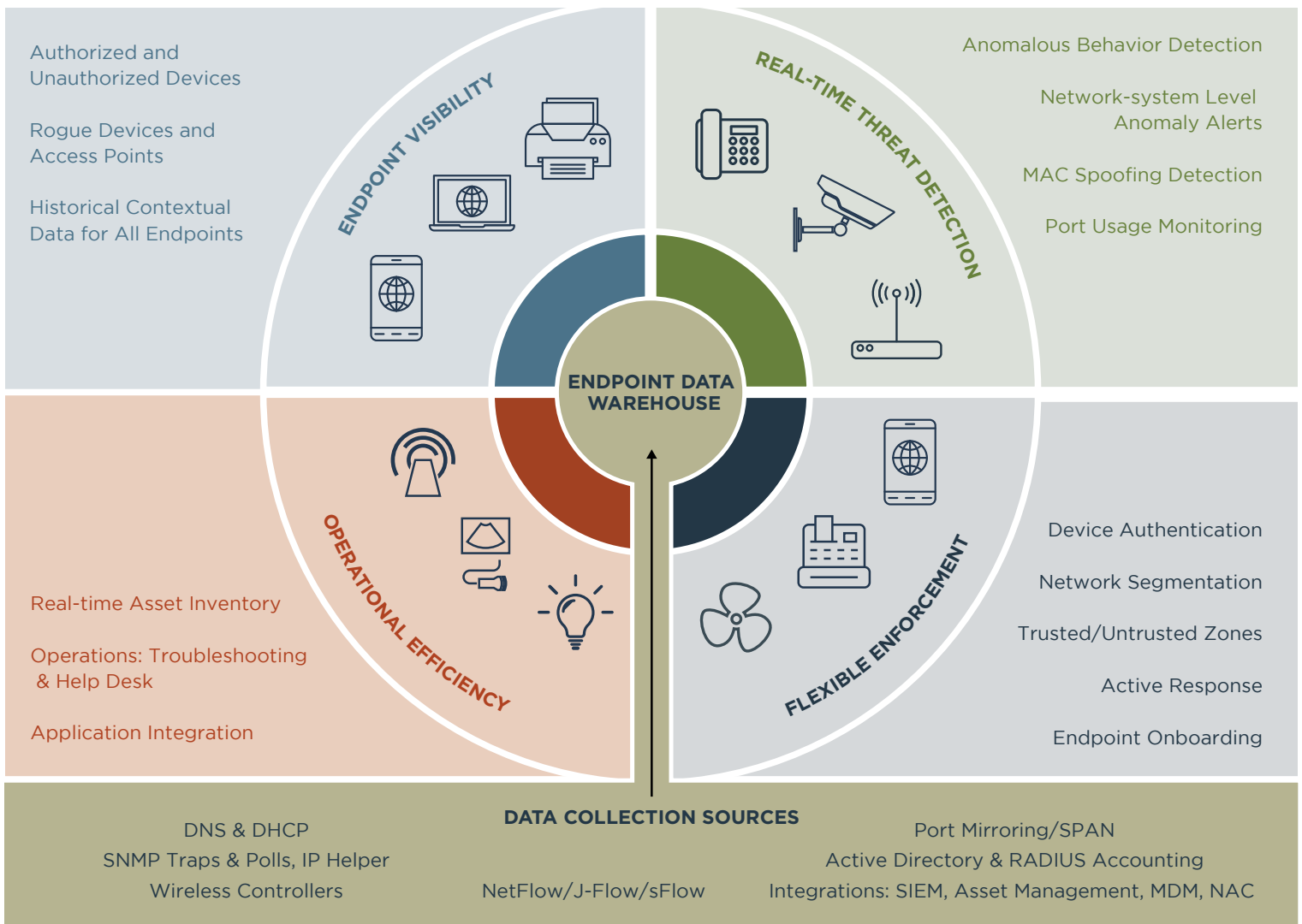
The Great Bay Network Intelligence Platform™ is designed to discover, inventory and track all network attached endpoints with a MAC or IP address—in real time and without an agent. To do this, the Great Bay Network Intelligence Platform™ both passively and actively gathers informational device attributes from a variety of data collection sources including DHCP, SNMP polling, SNMP traps, NetFlow/J-Flow/sFlow, Active Directory, RADIUS Accounting, network traffic (SPAN) and DNS. Once collected, the rich, contextual endpoint data is aggregated into a warehouse and continuously leveraged to identify, differentiate and monitor both managed and unmanaged endpoints in real time.

REAL-TIME VALIDATION

The Great Bay Network Intelligence Platform™ records and analyzes the identity and behavioral attributes of endpoints on the network and uses these attributes to assign every device to a group, called a profile. Each profile is a logical container holding one or more endpoints with similar function, capability or other defining characteristics. When identified, the platform attaches a certainty value to the device. The certainty value is calculated based off of the rule(s) in the profile that test true for the device. Profile rules and certainty values are used to determine which profile is the best match for the endpoint.

FLEXIBLE ENFORCEMENT

The Great Bay Network Intelligence Platform™ identifies real-time events such as endpoints being added to the network, duplicate MAC addresses and changes in identity and behavioral attributes of a device. When one or more attributes of a device change, the platform evaluates whether or not the observed change warrants an adjustment of the existing endpoint profile. If a change in profile is warranted, the solution transitions the endpoint profile, triggers an event and automates a preferred remediation action such as alerting, quarantine or port blocking. The Great Bay Network Intelligence Platform™ can even automate a change in the access provided by the authentication system for the particular endpoint, thereby removing or changing network access permissions.



WHY GREAT BAY

- Over 20 million devices identified, monitored and secured
- Agentless design
- Proven to scale to more than 1.5 million devices
- Unmatched collection of device attributes from dozens of data sources
- Thousands of pre-built device profiles, including IoT and medical devices
- Real-time monitoring and validation of device identity
- 100% implementation success rate
- Fortune 500 customer base
- API for ecosystem integrations such as Asset Management, SIEM and MDM

PROVEN RESULTS

- With Great Bay, organizations across the healthcare, finance and manufacturing industries have experienced:
- Unmatched visibility into all IoT and traditional endpoints on the network
 - Real-time detection of events, like MAC spoof attempts
 - Reduction of full-time equivalents (FTEs) due to automated device inventory and profiling
 - 75% reduction in time spent on endpoint lookups by help desk staff
 - Simplified onboarding of thousands of devices during M&A



7900 International Drive, Suite 625 • Bloomington, MN 55425
+1.763.251.1400 • GreatBaySoftware.com

